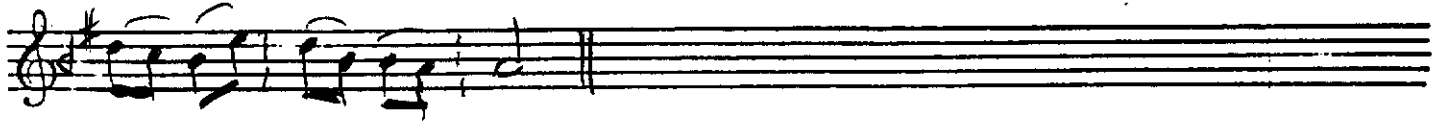


(a.)  
makam: BAYÂTÎ PESREV MEHTER (iç HÂNELİ)  
usûl : SAKİYL (Kantemiroğlu)'ndan

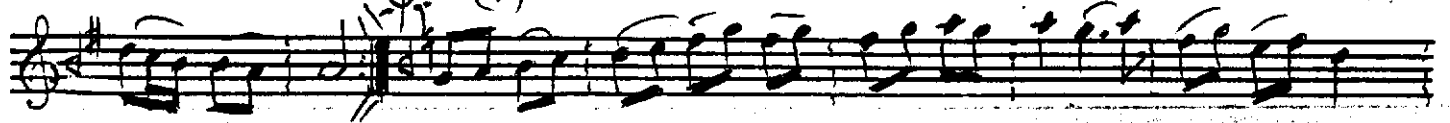
güfte: —  
beste: Nefis  
BEHRAM AGA

$\bullet = 208$

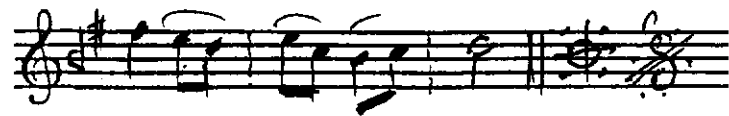
(Serine) (SH)



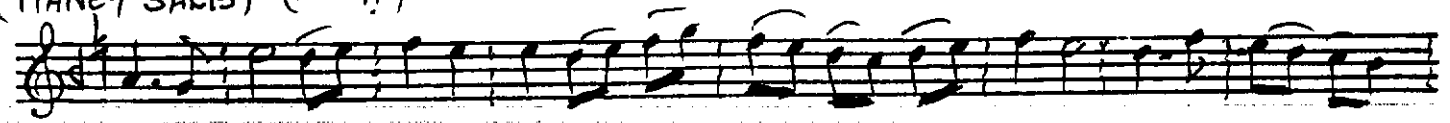
~~20~~ (Mülâzime <sup>(M)</sup> (MT))



(HANEI SANI) (II.HI)



(HĀNEJ SĀLIS) (III. H)



SH-----Mt

II. Ht

Handwritten musical notation on a five-line staff. The notation includes a treble clef, a key signature of one sharp (F#), and a series of notes and rests. The notes are written in a cursive, handwritten style. The staff is filled with musical notation, including eighth and sixteenth notes, and rests. The handwriting is somewhat slanted and expressive.

